

MAY 18 2018

Index No. N-15

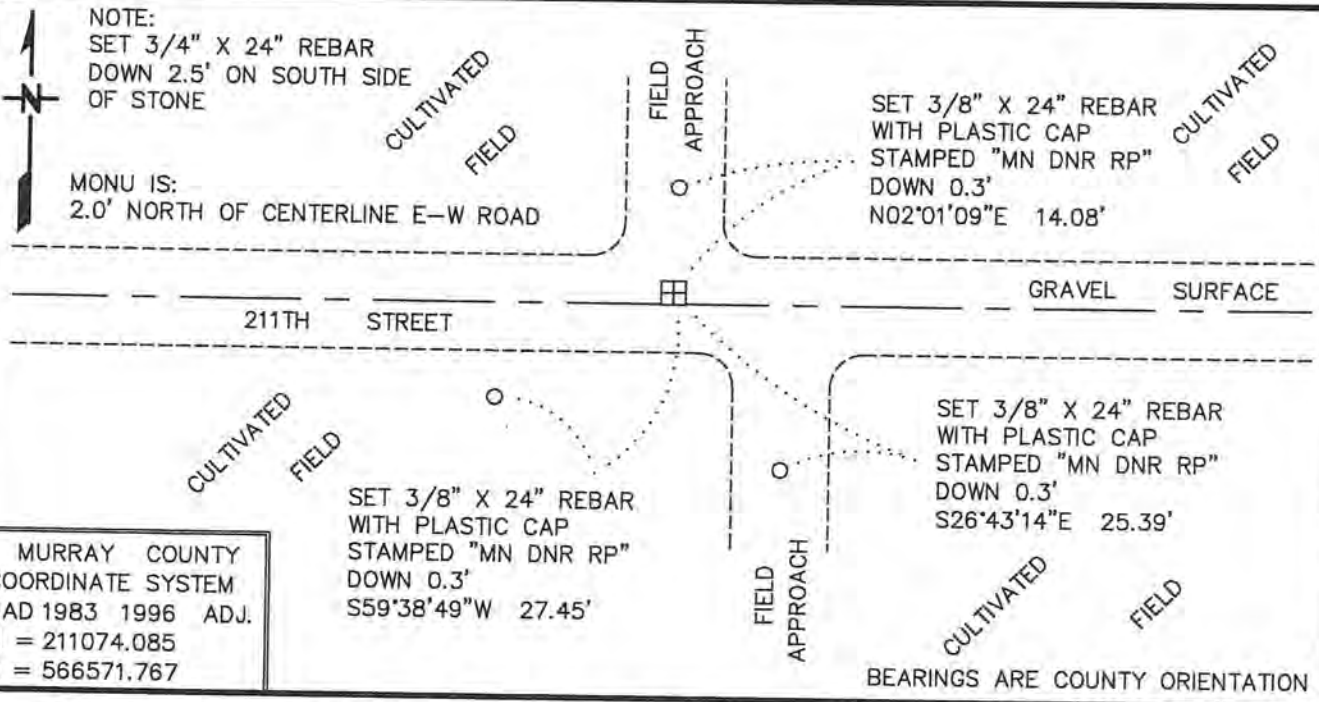
# CERTIFICATE OF LOCATION OF GOVERNMENT CORNER

NORTH QUARTER Corner of Section 22, Township 108 N, Range 39 W

5TH Principal Meridian, State of Minnesota, County of MURRAY

At the corner location shown on the sketch:

- On 9/12/2017 found a 13" X 10" STONE, DOWN 2.0'  
DATE
- left monument as found,  lowered monument,  removed monument (explain)
- On 9/12/2017 Placed a 3/4" X 12" REBAR WITH PLASTIC CAP STAMPED  
DATE  
"MN DNR LS 17003", DOWN 0.5', OVER STONE



MURRAY COUNTY  
COORDINATE SYSTEM  
NAD 1983 1996 ADJ.  
N = 211074.085  
E = 566571.767

Statement of evidence for this corner location is on back of this page. FEBRUARY 2018 WMA 02039

I hereby certify that this plan, specification, or report was prepared by me or under my direct supervision and that I am a duly Licensed Land Surveyor under the laws of the State of Minnesota.

SIGNATURE Bruce W. Shepherd DATE 5/15/10 License Number 17003  
BRUCE W SHEPPERD

The DNR Division of Lands and Minerals contacted the following for survey information:

Website - [mngeo.state.mn.us](http://mngeo.state.mn.us) for GLO plat and field notes

Website - [murray-countymn.com](http://murray-countymn.com) for section and quarter section corner information

Murray County Recorder's Office

Zieske Land Surveying, Inc. of Windom

Madsen Land Surveying, Inc. of Fairmont

Bonnema Runke Stern, Inc. of Willmar

1861 U.S. General Land Office notes, obtained from [mngeo.state.mn.us](http://mngeo.state.mn.us), show the corner marked with a post, in a mound.

No Surveyor's Record Book A, page 254 obtained from the Murray County Recorder's  
Date Office, which is also on [murray-countymn.com](http://murray-countymn.com), shows a government corner at the corner. The corner is shown:

2638.10 feet from the northeast corner of Section 21

2645.80 feet from the northeast corner of Section 22

Survey states – *see page 240*. The following note is on page 240:

Surveyed by D.L. Bigham, County Surveyor of Redwood County, Minn. June 1901. Plotted by him July 5, 1901.

Original plat on file in office of Town Clerk of Holly Township.

This record made by J.R. Johnston, Co. Surveyor of Murray Co from original plat. June 12, 1915.

No Surveyor's Record Book A, page 261 obtained from the Murray County Recorder's  
Date Office, which is also on [murray-countymn.com](http://murray-countymn.com), shows a government corner at the corner. The corner is shown:

2638.10 feet from the northeast corner of Section 21

2645.80 feet from the northeast corner of Section 22

Survey states – *see page 240*. The following note is on page 240:

Surveyed by D.L. Bigham, County Surveyor of Redwood County, Minn. June 1901. Plotted by him July 5, 1901.

Original plat on file in office of Town Clerk of Holly Township.

This record made by J.R. Johnston, Co. Surveyor of Murray Co from original plat. June 12, 1915.

1915 June 16, Surveyor's Record Book A, page 277 obtained from the Murray County Recorder's Office, contains a survey by J.R. Johnston. Survey states the following about the corner:

“Stone set on location of Government stake by J. R. Johnston County Surveyor Murray County”

North Quarter Corner of Section 22, Township 108 North, Range 39 West

Page 2 of 2

The corner is shown:

2640.00 feet from the northeast corner of Section 21

2646.5 feet from the center of Section 15

5293.0 feet from the north quarter corner of Section 15

- 2017 January 3, A Certificate of Survey in the SE $\frac{1}{4}$  SW $\frac{1}{4}$  of Section 15, by Joshua M. Stern, PLS 46169, obtained from Bonnema Runke Stern, Inc., shows a bearing from the southwest corner of Section 15 to the southeast corner of Section 15 but do information is given about the south quarter corner of Section 15/north quarter corner of Section 22.
- 2017 September 12, the DNR Division of Lands and Minerals dug with a backhoe in the area of the corner and found a 13 inch by 10 inch stone, down 2.0 feet. Than a  $\frac{3}{4}$  inch by 24 inch rebar with a plastic cap stamped "MN DNR LS 17003" was set, down 0.5 of a foot, over the stone and found it to be:
- a) 2.0 feet north of the center line of east-west 211<sup>th</sup> Street (gravel surface)
  - b) 2640.37 feet from the northeast corner of Section 21
  - c) 2650.24 feet from the northeast corner of Section 22
  - d) 5289.74 feet from the north quarter corner of Section 15
  - e) 3.11 feet north and 1.10 feet west of the computed proportional measurement position per distances in Surveyor's Record Book A, pages 254 and 261

Analysis of the above information led the DNR Division of Lands and Minerals to conclude that the found stone, which dates back to a 1915 survey, marks the location of the corner. A  $\frac{3}{4}$  inch by 24 inch rebar was set, down 2.5 feet, on the south side of the stone.